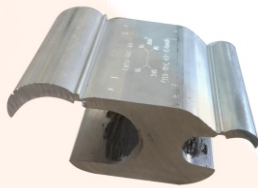


B612 Compression tap connector H type CRH series

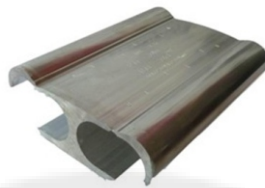
PRODUCT DESCRIPTION:

For ACRS, aluminum and/or copper conductors in various dead end terminals.
For cable taps and earth grid ring mains

Sector-shaped conductors must be rounded with round-forming dies.



CRH



Silicone Rubber Cover CRHZ

TYPE	Specification				Pressing Connection			Silicone rubber
	Main conductor		Tap conductor		Press Mold	Times	Length	cover TYPE
	Diameter	Cross section	Diameter	Cross section			(mm+1)	
	(mm)	(mm ²)	(mm)	(mm ²)				
CRH11	4.8-8.2	16-35	4.8-8.2	16-35	0-0	2	44	CRHZ-1
CRH21	8.3-14.0	50-95	4.8-9.6	16-50	1-2	3	63	CRHZ-2
CRH22	9.60-14.0	50-95	10.0-14.0	50-95	1-2	3	63	CRHZ-2
CRH31	13.0-22.4	95-240	4.8-11.4	16-70	3-5	3	63	CRHZ-2
CRH32	13.0-22.4	95-240	11.6-16.0	70-150	3-5	3	63	CRHZ-2
CRH41	16.2-22.4	150-240	16.2-22.4	150-240	3-5	4	114	CRHZ-3
CRH51	22.4-25.9	300-400	10.0-14.5	70-120	3-5	3	89	CRHZ-3
CRH52	22.4-25.9	300-400	14.6-18.0	120-185	3-5	3	89	CRHZ-3
CRH53	22.4-25.9	300-400	18.9-22.4	185-240	3-5	4	118	CRHZ-3
CRH54	22.4-25.9	300-400	22.4-25.9	300-400	3-5	4	118	CRHZ-3

USED MATERIALS:

Aluminum Alloy

VARIANTS:

The product is manufactured and supplied in modifications as following page.
Special range can be required.

STORAGE AND TRANSPORT:

Product do not have any specific storage requirements. Its is fire resistant and non-hazardous.

ACCESSORIES FOR YOUR CHOOSE IF YOU NEED:

* **Rubber cover** for your choose: CRHZ;